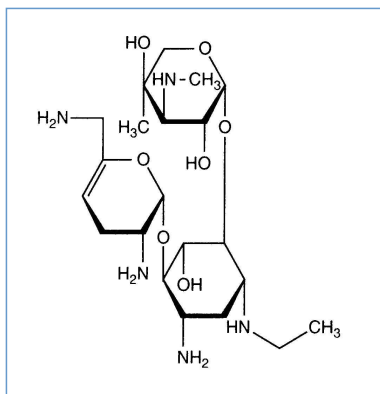


Stabilis



Netilmicin sulfate



Noms commerciaux

| | |
|--------------|---|
| Bactob | Inde |
| Beltob | Inde |
| Bramicil | Italie |
| Brulamycin | Hongrie |
| Eltol | Inde |
| Fytobra | Inde |
| Gernebcin | Allemagne |
| Komitub | Inde |
| Nebcin | Arabie Saoudite, Australie, Egypte, Emirats Arabes Unis, Grande Bretagne, Grèce, Nouvelle Zélande |
| Nebcina | Danemark, Maroc, Norvège, Suède |
| Nebcine | Maroc |
| Nebicina | Italie |
| Netilyn | Finlande, Suède |
| Netromicina | Portugal |
| Netromicine | France |
| Netromycine | Grèce, Pologne, Russie, Turquie |
| Nettacin | Italie |
| Obracin | Belgique, Luxembourg, Pays bas, Suisse |
| Tobra | Allemagne |
| Tobra Alex | Egypte |
| Tobra Day | Nouvelle Zélande |
| Tobra Gobens | Espagne |
| Tobracin | Egypte |
| Tobradistin | Espagne |
| Tobramicina | Espagne, Italie, Portugal, Vénézuéla |
| Tobramina | Brésil |
| Tobramycin | Allemagne, Arabie Saoudite, Australie, Canada, Etats Unis d'Amérique, Grande Bretagne, Irlande, Norvège |
| Tobramycine | Belgique, Canada, Luxembourg, Pays bas |
| Tobrasix | Autriche |
| Tobrazid | Allemagne |
| Tomycin | Finlande |
| Zetamicin | Italie |



Stabilité des solutions

| | | 3 mg/ml | 25°C | | 7 | | | 1200 |
|--|----|----------------|------|--|----|--|--|------|
| | | 3 mg/ml | 4°C | | 7 | | | 1200 |
| | | 3 mg/ml | 24°C | | 24 | | | 421 |
| | | 3 mg/ml | 25°C | | 7 | | | 1200 |
| | | 3 mg/ml | 4°C | | 7 | | | 1200 |
| | RL | 3 mg/ml | 25°C | | 7 | | | 1200 |
| | RL | 3 mg/ml | 4°C | | 7 | | | 1200 |
| | | 3 mg/ml | 25°C | | 7 | | | 1200 |
| | | 3 mg/ml | 4°C | | 7 | | | 1200 |
| | | 3 mg/ml | 25°C | | 7 | | | 1200 |
| | | 3 mg/ml | 4°C | | 7 | | | 1200 |
| | | 3 mg/ml | 24°C | | 24 | | | 421 |
| | | 10 mg/ml | 25°C | | 9 | | | 1929 |
| | | 10 & 100 mg/ml | 7°C | | 90 | | | 1929 |
| | | 100 mg/ml | 25°C | | 30 | | | 1929 |



Stabilité en mélange

| | | 3 mg/ml | 24°C | | Clindamycin phosphate : 9 mg/ml | 24 | | 421 |
|--|--|---------|------|--|---------------------------------|----|--|-----|
| | | 3 mg/ml | 24°C | | Clindamycin phosphate : 9 mg/ml | 24 | | 421 |



Compatibilités

| | Netilmicin sulfate : 3 mg/ml | 1200 |
|--|--|------|
| | Netilmicin sulfate : 3 mg/ml Aminocaproic acid : 10 mg/ml | 1200 |
| | Netilmicin sulfate : 5 mg/ml Aminophylline : 0,8 mg/ml | 1236 |
| | Netilmicin sulfate Amoxicillin sodium / clavulanic acid | 3545 |

| | | | | |
|--|--|---|------|------|
| | | Netilmicin sulfate : 5 mg/ml | | 301 |
| | | Netilmicin sulfate : 50 & 100 mg/ml | | 999 |
| | | Netilmicin sulfate : 5 mg/ml | | 1415 |
| | | Netilmicin sulfate : 5 mg/ml Allopurinol sodium : 3 mg/ml | | 307 |
| | | Netilmicin sulfate : 5 mg/ml Amifostine : 10 mg/ml | | 3 |
| | | Netilmicin sulfate Amoxicillin sodium | | 3527 |
| | | Netilmicin sulfate : 5 mg/ml Amphotericin B cholesteryl sulfate complex : 0,83 mg/ml | | 921 |
| | | Netilmicin sulfate : 3 mg/ml Atropine sulfate : 0.04 mg/ml | | 1200 |
| | | Netilmicin sulfate : 5 mg/ml Aztreonam : 40 mg/ml | | 99 |
| | | Netilmicin sulfate Calcium gluconate | | 3644 |
| | | Netilmicin sulfate : 5 mg/ml Calcium gluconate : 40 mg/ml | | 1236 |
| | | Netilmicin sulfate Cefamandole nafate | | 3546 |
| | | Netilmicin sulfate Cefepime dihydrochloride | | 3548 |
| | | Netilmicin sulfate Cefoperazone sodium | | 3544 |
| | | Netilmicin sulfate Ceftazidime | | 3543 |
| | | Netilmicin sulfate Ceftazidime | | 3883 |
| | | Netilmicin sulfate Ceftriaxone disodium | | 3523 |
| | | Netilmicin sulfate Cefuroxime sodium | | 3687 |
| | | Netilmicin sulfate : 3 mg/ml Chlorpromazine hydrochloride : 0.1 mg/ml | | 1200 |
| | | Netilmicin sulfate : 2,5 mg/ml Ciprofloxacin lactate : 2 mg/ml | | 289 |
| | | Netilmicin sulfate : 5 mg/ml Cisatracurium besylate : 0.1 >> 5 mg/ml | | 299 |
| | | Netilmicin sulfate Cisplatin | | 3578 |
| | | Netilmicin sulfate Clindamycin phosphate | | 3526 |
| | | Netilmicin sulfate : 3 mg/ml Clindamycin phosphate : 9 mg/ml | | 421 |
| | | Netilmicin sulfate : 3 mg/ml Dexamethasone sodium phosphate : 0.08 mg/ml | | 1200 |
| | | Netilmicin sulfate : 3 mg/ml Diazepam : 0.04 mg/ml | | 1200 |
| | | Netilmicin sulfate : 3 mg/ml Diphenhydramine hydrochloride : 0.4 mg/ml | | 1200 |

| | | | | |
|--|--|--|--|------|
| | | Netilmicin sulfate : 5 mg/ml Docetaxel : 0.9 mg/ml | | 1754 |
| | | Netilmicin sulfate : 5 mg/ml Doxorubicin hydrochloride liposome peg : 0.4 mg/ml | | 251 |
| | | Netilmicin sulfate Erythromycin lactobionate | | 3674 |
| | | Netilmicin sulfate : 5 mg/ml Etoposide phosphate : 5 mg/ml | | 1410 |
| | | Netilmicin sulfate : 5 mg/ml Filgrastim : 30 µg/ml | | 244 |
| | | Netilmicin sulfate Flucloxacillin sodium | | 3522 |
| | | Netilmicin sulfate : 5 mg/ml Fludarabine phosphate : 1 mg/ml | | 492 |
| | | Netilmicin sulfate : 1,5 mg/ml Furosemide : 0,4 mg/ml | | 367 |
| | | Netilmicin sulfate : 5 mg/ml Gemcitabine hydrochloride : 10 mg/ml | | 1423 |
| | | Netilmicin sulfate : 5 mg/ml Granisetron hydrochloride : 0.05 mg/ml | | 182 |
| | | Netilmicin sulfate Heparin sodium | | 1022 |
| | | Netilmicin sulfate Heparin sodium | | 3540 |
| | | Netilmicin sulfate : 3 mg/ml Hydrocortisone sodium succinate : 0.8 mg/ml | | 1200 |
| | | Netilmicin sulfate : 3 mg/ml Iron dextran | | 1200 |
| | | Netilmicin sulfate : 3 mg/ml Isoprenaline hydrochloride : 0.4 mg/ml | | 1200 |
| | | Netilmicin sulfate : 5 mg/ml Linezolid : 2 mg/ml | | 1925 |
| | | Netilmicin sulfate : 5 mg/ml Melphalan : 0.1 mg/ml | | 169 |
| | | Netilmicin sulfate : 1.4 mg/ml Metronidazole : 5 mg/ml | | 1035 |
| | | Netilmicin sulfate : 1 mg/ml Metronidazole : 5 mg/ml | | 958 |
| | | Netilmicin sulfate Metronidazole | | 3594 |
| | | Netilmicin sulfate : 3 mg/ml Neostigmine methylsulfate : 0.04 mg/ml | | 1200 |
| | | Netilmicin sulfate : 3 mg/ml Norepinephrine bitartrate : 0.064 mg/ml | | 1200 |
| | | Netilmicin sulfate : 3 mg/ml Oxytocin | | 1200 |
| | | Netilmicin sulfate : 3 mg/ml Phytomenadione : 0.1 mg/ml | | 1200 |
| | | Netilmicin sulfate Piperacillin sodium / tazobactam | | 3586 |
| | | Netilmicin sulfate : 3 mg/ml Potassium chloride | | 1200 |

| | | | |
|--|---|--|------|
| | Netilmicin sulfate : 3 mg/ml Procainamide hydrochloride : 4 mg/ml | | 1200 |
| | Netilmicin sulfate : 3 mg/ml Promethazine hydrochloride : 0.1 mg/ml | | 1200 |
| | | | 300 |
| | Netilmicin sulfate : 1 mg/ml Ranitidine hydrochloride : 0,5 mg/ml | | 958 |
| | Netilmicin sulfate : 5 mg/ml Remifentanyl hydrochloride : 25 & 250 µg/ml | | 59 |
| | Netilmicin sulfate : 5 mg/ml Sargramostim : 10 µg/ml | | 335 |
| | Netilmicin sulfate Teicoplanine | | 3656 |
| | Netilmicin sulfate Temocilline | | 2296 |
| | Netilmicin sulfate : 5 mg/ml Teniposide : 0.1 mg/ml | | 905 |
| | Netilmicin sulfate : 5 mg/ml Thiotepa : 1 mg/ml | | 249 |
| | | | 3587 |
| | Netilmicin sulfate : 3 mg/ml Triflupromazine hydrochloride : 0.4 mg/ml | | 1200 |
| | Netilmicin sulfate : 5 mg/ml Vinorelbine tartrate : 1 mg/ml | | 84 |



Voie d'administration



Bibliographie

| | Type | Source |
|----|-------|---|
| 3 | Revue | Trissel LA, Martinez JF. Compatibility of amifostine with selected drugs during simulated Y-site administration. Am J Health-Syst Pharm 1995 ; 52: 2208-2212. |
| 59 | Revue | Trissel LA, Gilbert DL, Martinez JF, Kim MC. Compatibility of remifentanyl hydrochloride with selected drugs during simulated Y-site administration. Am J Health-Syst Pharm 1997 ; 54: 2192-2196. |
| 84 | Revue | Trissel LA, Martinez JF. Visual, turbidimetric, and particle-content assessment of compatibility of vinorelbine tartrate with selected drugs during simulated Y-site injection. Am J Hosp Pharm 1994 ; 51: 495-499. |
| 99 | Revue | Trissel LA, Martinez JF. Compatibility of aztreonam with selected drugs during simulated Y-site administration. Am J Health-Syst Pharm 1995 ; 52: 1086-1090. |

| | | |
|-----|-------|---|
| 169 | Revue | Trissel LA, Martinez JF. Physical compatibility of melphalan with selected drugs during simulated Y-site administration. Am J Hosp Pharm 1993 ; 50: 2359-2363. |
| 182 | Revue | Trissel LA, Gilbert DL, Martinez JF. Compatibility of granisetron hydrochloride with selected drugs during simulated Y-site administration. Am J Health-Syst Pharm 1997 ; 54: 56-60. |
| 244 | Revue | Trissel LA, Martinez JF. Compatibility of filgrastim with selected drugs during simulated Y-site administration. Am J Hosp Pharm 1994 ; 51: 1907-1913. |
| 249 | Revue | Trissel LA, Martinez JF. Compatibility of thiotepa (lyophilized) with selected drugs during simulated Y-site administration. Am J Health-Syst Pharm 1996 ; 53: 1041-1045. |
| 251 | Revue | Trissel LA, Gilbert DL, Martinez JF. Compatibility of doxorubicin hydrochloride liposome injection with selected other drugs during simulated Y-site administration. Am J Health-Syst Pharm 1997 ; 54: 2708-2713. |
| 289 | Revue | Jim LK. Physical and chemical compatibility of intravenous ciprofloxacin with other drugs. Ann Pharmacotherapy 1993 ; 27: 704-707. |
| 299 | Revue | Trissel LA, Martinez JF, Gilbert DL. Compatibility of cisatracurium besylate with selected drugs during simulated Y-site administration. Am J Health-Syst Pharm 1997 ; 54: 1735-1741. |
| 300 | Revue | Trissel LA, Gilbert DL, Martinez JF. Compatibility of propofol injectable emulsion with selected drugs during simulated Y-site administration. Am J Health-Syst Pharm 1997 ; 54: 1287-1292. |
| 301 | Revue | Trissel LA, Gilbert DL, Martinez JF, Baker MB, Walter WV, Mirtallo JM. Compatibility of parenteral nutrient solutions with selected drugs during simulated Y-site administration. Am J Health-Syst Pharm 1997 ; 54: 1295-1300. |
| 307 | Revue | Trissel LA, Martinez JF. Compatibility of allopurinol sodium with selected drugs during simulated Y-site administration. Am J Hosp Pharm 1994 ; 51: 1792-1799. |
| 335 | Revue | Trissel LA, Bready BB, Kwan JW, Santiago NM. Visual compatibility of sargramostim with selected antineoplastic agents, anti-infectives, or other drugs during simulated Y-site injection. Am J Hosp Pharm 1992 ; 49: 402-406. |
| 367 | Revue | Thompson DF, Allen LV, Desai SR, Rao PS. Compatibility of furosemide with aminoglycoside admixtures. Am J Hosp Pharm 1985 ; 42: 116-119. |
| 421 | Revue | Foley PT, Bosso JA, Bair JN, Townsend RJ. Compatibility of clindamycin phosphate with cefotaxim sodium or netilmicin sulfate in small-volume admixtures. Am J Hosp Pharm 1985 ; 42: 839-843. |
| 492 | Revue | Trissel LA, Parks NPT, Santiago NM. Visual compatibility of fludarabine phosphate with antineoplastic drugs, anti-infectives, and other selected drugs during simulated Y-site injection. Am J Hosp Pharm 1991 ; 48: 2186-2189. |
| 905 | Revue | Trissel LA, Martinez JF. Screening teniposide for Y-site physical incompatibilities. Hosp Pharm 1994 ; 29: 1010-1017. |
| 921 | Revue | Trissel LA, Gilbert DL, Martinez JF. Incompatibility and compatibility of amphotericin B cholesteryl sulfate complex with selected other drugs during simulated Y-site administration. Hosp Pharm 1998 ; 33: 284-292. |

| | | |
|------|-------------|--|
| 958 | Revue | Vervloet E, Lammers J, Tan LSL, Van Mourik CH, Rots M. Netilmicin sulfate stability in combinaison with metronidazole or ranitidine hydrochloride in NaCl 0.9% infusion. Ann Pharmacotherapy 1990 ; 24: 440-442. |
| 999 | Revue | Watson D. Piggyback compatibility of antibiotics with pediatric parenteral nutrition solution. JPEN 1985 ; 9: 220-224. |
| 1022 | Revue | Hutchinson SMW. Heparin and aminoglycosides instability. Drug Intell Clin Pharm 1986 ; 20: 886. |
| 1035 | Revue | Bisaillon S, Sarrazin R. Compatibility of several antibiotics or hydrocortisone when added to metronidazole solution for intravenous infusion. J Parenter Sci Technol 1983 ; 37: 129-132. |
| 1200 | Revue | Chaudry IA, Bruey KP, Hurlburt LE, Oden EM. Compatibility of netilmicin sulfate injection with commonly used intravenous injections and additives. Am J Hosp Pharm 1981 ; 38: 1737-1742. |
| 1236 | Revue | Kuhn RJ, Nahata MC. Stability of netilmicin sulfate in admixtures with calcium gluconate and aminophylline. Am J Hosp Pharm 1986 ; 43: 1241-1242. |
| 1410 | Revue | Trissel LA, Martinez JF, Simmons M. Compatibility of etoposide phosphate with selected drugs during simulated Y-site injection. J Am Pharm Assoc 1999 ; 39: 141-145. |
| 1415 | Revue | Trissel L.A, Gilbert D.L, Martinez J.F, Baker M.B, Walter W.V, Mirtallo J.M. Compatibility of medications with 3-in-1 parenteral nutrition admixtures. JPEN 1999 ; 23: 67-74. |
| 1423 | Revue | Trissel LA, Martinez JF, Gilbert DL. Compatibility of gemcitabine hydrochloride with 107 selected drugs during simulated Y-site injection. J Am Pharm Assoc 1999 ; 39: 514-518. |
| 1754 | Revue | Trissel LA, Gilbert DL, Wolkin AC. Compatibility of docetaxel with selected drugs during simulated Y-site administration. Int J Pharm Compound 1999 ; 3: 241-244. |
| 1925 | Revue | Trissel LA , Williams KY, Gilbert DL. Compatibility screening of linezolid injection during simulated Y-site administration with other drugs and infusion solutions. J Am Pharm Assoc 2000 ; 40: 515-519. |
| 1929 | Revue | Rigge DC, Jones MF. Shelf lives of aseptically prepared medicines - stability of netilmicin injection in polypropylene syringes. J Pharm Biomed Anal 2004 ; 35: 1251-1256. |
| 2296 | Laboratoire | Témocilline (Negaban®) - Résumé des caractéristiques du produit Eumedica 2017 |
| 3522 | Laboratoire | Flucloxacillin - Summary of Product Characteristics. Actavis 2013 |
| 3523 | Laboratoire | Ceftriaxone (Rocephin®) - Summary of Product Characteristics. Roche 2018 |
| 3526 | Laboratoire | Clindamycin (Dalacin®) - Summary of Product Characteristics Pharmacia 2010 |
| 3527 | Laboratoire | Amoxicillin (Amoxil®) – Summary of Product Characteristics Glaxo Smith Kline 2018 |
| 3540 | Laboratoire | Heparin sodium - Summary of Product Characteristics. Wockhardt 2010 |
| 3543 | Laboratoire | Ceftazidime – Summary of Product Characteristics Wockhardt 2013 |

| | | |
|------|-------------|--|
| 3544 | Laboratoire | Cefoperazone (Cefobid®) - Summary of Product Characteristics Pfizer 2006 |
| 3545 | Laboratoire | Amoxicilline / acide clavulanique - Résumé des caractéristiques du produit Mylan SAS 2009 |
| 3546 | Laboratoire | Cefamandole Flavelab - Résumé des caractéristiques du produit Panpharma SA 2007 |
| 3548 | Laboratoire | Cefepime (Maxipime®) - Summary of Product characteristics. Bristol Myers Squibb 2007 |
| 3578 | Laboratoire | Cisplatine - Summary of Product Characteristics Accord Healthcare 2011 |
| 3586 | Laboratoire | Piperacilline tazobactam Actavis® - Résumé des caractéristiques du produit Actavis France 2010 |
| 3587 | Laboratoire | Ticarcilline/acide clavulanique (Timentin®) - Summary of Product Characteristics GlaxoSmithKline 2014 |
| 3594 | Laboratoire | Metronidazole (Flagyl®) - Summary of Product Characteristics Zentiva 2013 |
| 3644 | Laboratoire | Calcium gluconate® - Summary of Product Characteristics HameIn Pharmaceuticals 2010 |
| 3656 | Laboratoire | Teicoplanine (Targocid®) - Résumé des caractéristiques du produit Sanofi Aventis France 2014 |
| 3674 | Laboratoire | Erythromycin lactobionate - Summary of Product Characteristics PanPharma 2016 |
| 3687 | Laboratoire | Cefuroxime sodium - Summary of Product Characteristics Stravencon 2013 |
| 3883 | Laboratoire | Ceftazidime - Résumé des caractéristiques du produit Arrow 2016 |



Dictionnaire

| | |
|---|--|
|  Antibiotique |  Injectable |
|  Noms commerciaux |  Stabilité des solutions |
|  Contenant |  Molécule |
|  Concentration |  Température |
|  Conservation |  Durée de stabilité |
|  Biosimilaire |  Données conflictuelles |
|  Bibliographie |  Verre |
|  Eau pour préparation injectable |  Non précisée |
|  Jour |  A l'abri de la lumière |
|  NaCl 0,9% ou glucose 5% |  Lumière |
|  Heure | RL Ringer lactate |
|  Chlorure de sodium 3% |  Glucose 10% |
|  Polyvinyl chlorure |  Seringue polypropylène |
|  Aucun |  Stabilité en mélange |
|  Solvant |  Molécule |
|  Compatibilités |  Compatible |
|  NaHCO ₃ |  NaCl 0,45% Glucose 5% |
|  Incompatibilité non précisée |  Incompatible |
|  Nutrition parentérale (mélange binaire) |  Nutrition parentérale (mélange ternaire) |
|  Précipitation en 1 heure |  Chlorure de sodium 0,9% |
|  Glucose 5% |  Instabilité chimique |
|  Précipitation immédiate |  Voie d'administration |
|  Intraveineuse |  Perfusion intraveineuse |
|  Intramusculaire |  Intrathécale |
|  Bibliographie |  Dictionnaire |